

Datavail's Oracle PBCS Accelerator

Boost productivity by getting into the cloud quickly, efficiently, and affordably

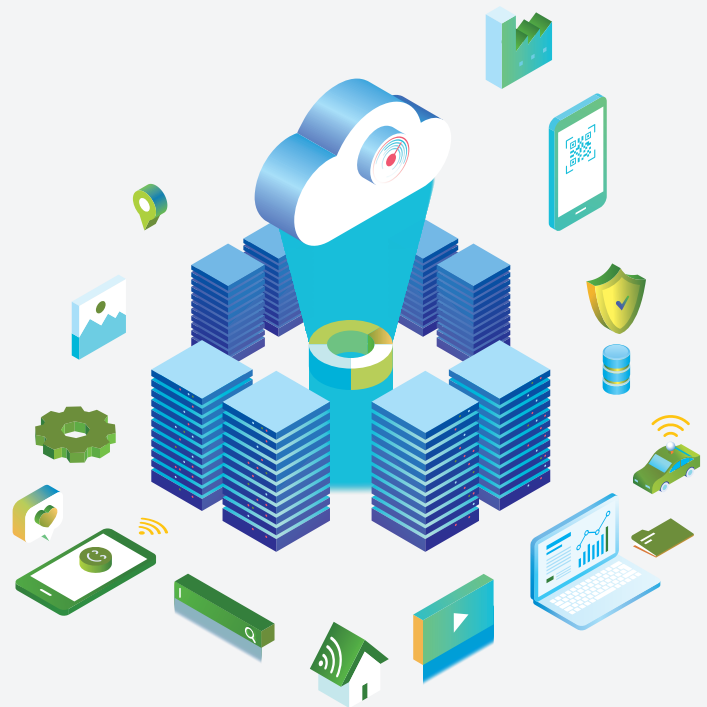
Making the decision to move to the cloud is only the beginning; getting there is a whole other animal. With a skilled and efficient team at your hands, you can avoid downtime, integration challenges, and get your team up-and-running in as little as six weeks.

Oracle PBCS

Oracle Planning and Budgeting Cloud Services, as the name suggests, is an enterprise solution for planning, budgeting and forecasting. More than 1,000 organizations – small, medium and large across a variety of industries – have successfully used Oracle PBCS to achieve world-class planning and budgeting performance without the need for pricey capital investments.

Benefits of Oracle PBCS

- Unified capabilities
- Office integration
- Reports and dashboards
- Modeling and analytics
- Simple maintenance
- Low IT overhead
- Oracle security
- Mobile-friendly interface



**Platinum
Partner**
Cloud Standard

Cloud Excellence Implementer
North America
EPM Enterprise Planning and Budgeting

Oracle PBCS Accelerator Packages

	SMALL	MEDIUM	LARGE
Metadata	<ul style="list-style-type: none"> Budget, Forecast and Actual scenarios Custom Account and Entity hierarchy 	<ul style="list-style-type: none"> Budget, Forecast and Actual scenarios Custom Account and Entity hierarchy 1 alternate hierarchy for Account and Entity Up to 2 additional custom dimensions 	<ul style="list-style-type: none"> Budget, Forecast and Actual scenarios Custom Account and Entity hierarchy 1 alternate hierarchy for Account and Entity Up to 3 additional custom dimensions
Rules	<ul style="list-style-type: none"> Consolidation/roll-up of data 	<ul style="list-style-type: none"> Consolidation/roll-up of data Actual vs. Budget/Forecast variance 	<ul style="list-style-type: none"> Consolidation/roll-up of data Actual vs. Budget/Forecast variance Driver-based calculations for operating revenue and cost of sales
Forms	<ul style="list-style-type: none"> 3 forms for input of budget/forecast data 	<ul style="list-style-type: none"> 5 forms for input of budget/forecast data 1 form for actual vs. budget variance analysis 	<ul style="list-style-type: none"> 10 forms for input of budget/forecast data 1 form for actual vs. budget variance analysis 2 forms for entering/updating driver assumptions
Data Integration	<ul style="list-style-type: none"> Not included 	<ul style="list-style-type: none"> Integration with 1 source system 	<ul style="list-style-type: none"> Integration with 1 source system Data load automation for 1 source system
Reports	<ul style="list-style-type: none"> 3 financial reporting reports 	<ul style="list-style-type: none"> 5 financial reporting reports 2 Smart View reports 	<ul style="list-style-type: none"> 10 financial reporting reports 5 Smart View reports
Duration	<ul style="list-style-type: none"> 6-8 weeks 	<ul style="list-style-type: none"> 8-10 weeks 	<ul style="list-style-type: none"> 10-12 weeks

PBCS Assumptions/Exclusions

The following items are excluded from scope:

- Report-level calculations (reports must follow primary dimension hierarchies)
- Dimension level security
- Task lists
- Custom navigation flows
- Workflow/process management
- Multi-currency

All offerings assume that metadata (members, descriptions and hierarchies) will be provided electronically.

About Datavail

Datavail is an Oracle Platinum Partner with 17 specializations, and an Oracle Cloud Excellence Implementor. Our dedicated team leads the industry in Oracle EPM Cloud consulting, implementations, migrations, data integration, and more.