

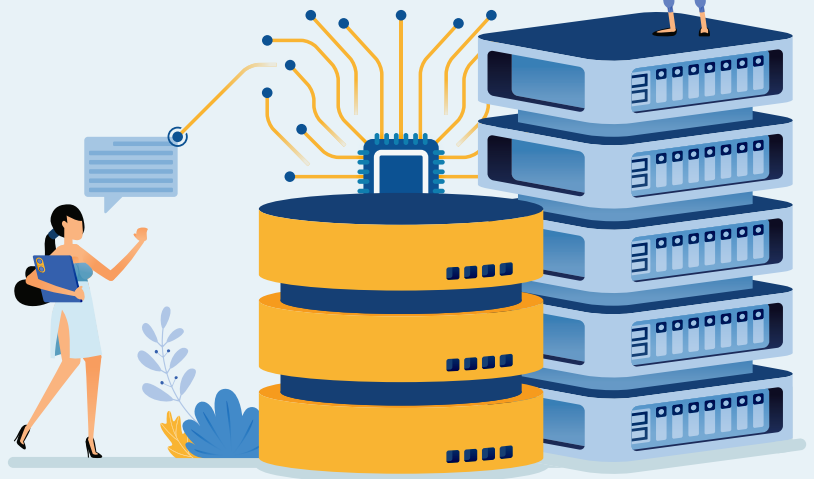
# Apache Cassandra Managed Support and Services

Datavail provides enterprise-grade assistance to optimize Cassandra performance, availability, and efficiency for your most critical workloads. Rely on our experts for database management, migration, modernization, and optimization on-premises and in the cloud.



## Cassandra Platforms We Support

- Apache Cassandra versions 1.x – 5.x
- DataStax
- Amazon Keyspaces
- Azure Managed Instance for Cassandra
- Azure Cosmos DB Cassandra API

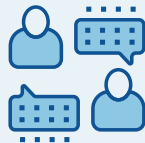


## Datavail's Cassandra Services

Get peace of mind with Datavail's Cassandra services. We provide comprehensive operational support, strategic guidance, and project services tailored to your needs.



24x7 Operational  
Support



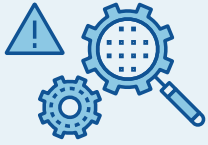
Project and  
Consulting Services



Database Assessments  
and Health Checks



Database Major / Minor  
Version Upgrades



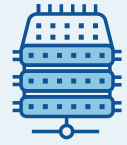
Monitoring and Incident Response



Performance Tuning



Query Optimization



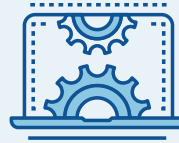
Backup & Disaster Recovery



High Availability



Cloud Migration



Site Reliability Engineering



Cloud Cost Optimization

Let Datavail help you maximize the value of Apache Cassandra for your most critical workloads. Get in touch to learn more.

## 24x7 Cassandra Operational Support

We have Cassandra Database experts ready to provide 24x7 technical support services for Cassandra. Our expert team of Apache Cassandra professionals have hands-on, real-world experience working with our customers' Cassandra clusters.

## Cassandra Monitoring and Alerts

Our team configures the best Cassandra monitoring tools, such as Applications Manager's Cassandra dashboard, and sets the alerts per best practices on Cassandra database nodes. Continuous monitoring keeps you on top of the health and performance of your mission-critical Cassandra clusters.



## Cassandra Database Cloud Migrations

Need help taking Cassandra to the cloud? Our team can help you plan and execute your Cassandra cloud migrations, whether you're moving from on-premises nodes or a different cloud provider.